



CE MARKED ANTIBODY COMBINATIONS
FOR LEUKEMIA / LYMPHOMA ANALYSIS

Because your patient is her everything



VISUALIZE
the possibilities.

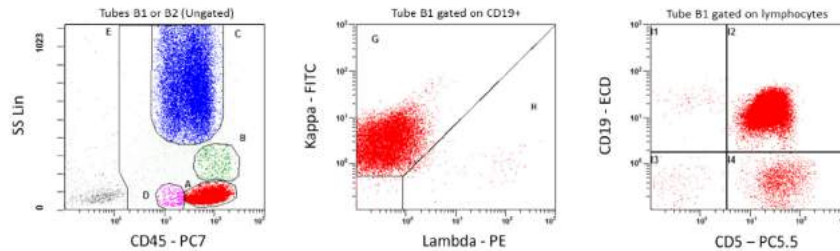


IDENTIFY MAJOR HEMATOLYMPHOID AND MYELOID CELL POPULATIONS

B-cell Tubes 1 and 2

Examples of dual parameter histograms from a **mature B-cell neoplasm** sample for ClearLab B1 and B2 reagents.

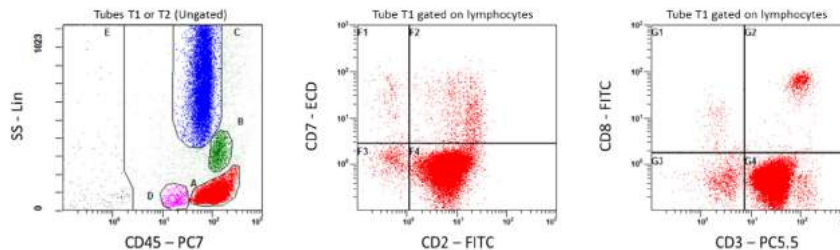
NOTE: not all histograms shown.



T-cell Tubes 1 and 2

Examples of dual parameter histograms from a **mature T-cell neoplasm peripheral blood** sample for ClearLab T1 and T2 reagents.

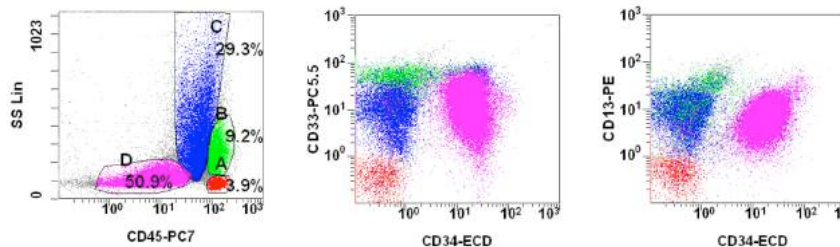
NOTE: not all histograms shown.



Myeloid Tube

Examples of dual parameter histograms from an **acute myeloid leukemia (AML) bone marrow** sample for ClearLab Myeloid reagents.

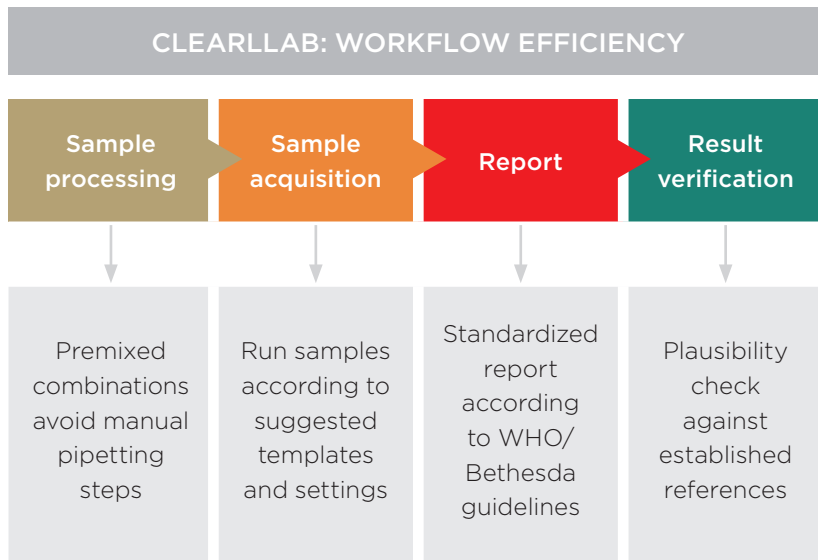
NOTE: not all histograms shown.



The ClearLab reagents are intended for in vitro diagnostic use as a screening panel for identification of various cell populations by immunophenotyping on an FC 500 flow cytometer. These reagents are used as an aid in the differential diagnosis of hematologically abnormal patients having, or suspected of having hematopoietic neoplasia including chronic leukemia, acute leukemia, non-Hodgkin lymphoma, myeloma, myelodysplastic syndrome (MDS), and/or myeloproliferative neoplasms (MPN). The reagents can be used with peripheral whole blood (collected in K₂EDTA, ACD or Heparin), bone marrow (collected in K₂EDTA, ACD or Heparin) and lymph node specimens for immunophenotyping. The results should be interpreted along with additional clinical and laboratory findings.



EMPOWER YOUR LAB'S WORKFLOW: ACCURACY AND RELIABILITY



How were the ClearLLab Antibodies selected?

The 2006 Bethesda International Consensus Conference and the 2008 WHO guidelines recommended marker combinations that we used to compose antibody panels directed against B, T, & myeloid lineage antigens intended to identify relevant leukocyte surface molecules.

What is in a ClearLLab Panel?

ClearLLab provides 2 T-cell tubes, 2 B-cell tubes and a Myeloid tube, each consisting of pre-mixed 4 to 5-color cocktails. Together this totals to 18 markers as directly conjugated antibodies.

How does ClearLLab help our lab?

Our kit is useful as an aid in the differential diagnosis of patients with certain abnormal hematology results and/or presence of blasts in the blood stream, bone marrow and/or lymph node specimens. The results are intended to be used with further clinical findings and laboratory tests such as genetic and molecular markers and morphological properties.

Flow cytometric analyses are an integral part of the standard of care in hematopathology. The ClearLLab Reagent Panel is a comprehensive **CE marked** combination of **conjugated antibody cocktails** for the flow cytometry characterization of **hematolymphoid neoplasia**.

Highlights

CE marked: Minimize your lab's validation work.

Enhanced workflow: No manual antibody cocktail preparation.

Consensus aligned: Ensures you work according to international guidelines.

Features

Small kit size: adapt your inventory to actual demand with 25 tests / vial.

Versatile: ClearLLab can be used with peripheral blood, bone marrow and lymph node specimens.

Identify major cell populations with ClearLLab's 5-combination, 18-marker panels.

ClearLLab Panels

For clinical labs who need accuracy, reliability, and to improve their workflow with a standardized kit and protocol, Beckman Coulter introduces a new CE marked, ready-to-use reagent combination for leukemia & lymphoma immunophenotyping. ClearLLab delivers cost savings and reduces the need for extensive validation, ultimately reducing the potential for errors and increasing confidence in results.

PN	PANELS	488 NM				
		FITC	PE	ECD	PC5.5	PC7
B66807	T-cell Tube 1 (T1) 25 tests	CD2	CD56	CD7	CD5	CD45
B66808	T-cell Tube 2 (T2) 25 tests	CD8	CD4	-	CD3	CD45
B66809	B-cell tube 1 (B1) 25 tests	kappa	lambda	CD19	CD5	CD45
B66810	B-cell tube 2 (B2) 25 tests	CD20	CD10	CD19	CD38	CD45
B66812	Myeloid Tube (M) 25 tests	CD7	CD13	CD34	CD33	CD45

5 individual tubes allow for more flexibility and adaptation to your laboratory's needs.



beckmancoulter.com/clearllab



© 2015 Beckman Coulter Life Sciences. All rights reserved. ClearLLab, ECD, and FC500 are trademarks of Beckman Coulter, Inc. Beckman Coulter and the stylized logo are trademarks of Beckman Coulter, Inc. and are registered in the USPTO. CE marked for in vitro diagnostic use in the European Union (Directive 98/79/CE).

Pending clearance by the United States Food and Drug Administration; not available for in vitro diagnostic use in the US. Not for Distribution in the United States.

Canada: The device may not have been licensed in accordance with Canadian law. The performance specifications of this product have not been established. Les spécifications de rendement de l'instrument n'ont pas été établies.

For Beckman Coulter's worldwide office locations and phone numbers, please visit "Contact Us" at beckmancoulter.com

FLOW-980SB09.15-A