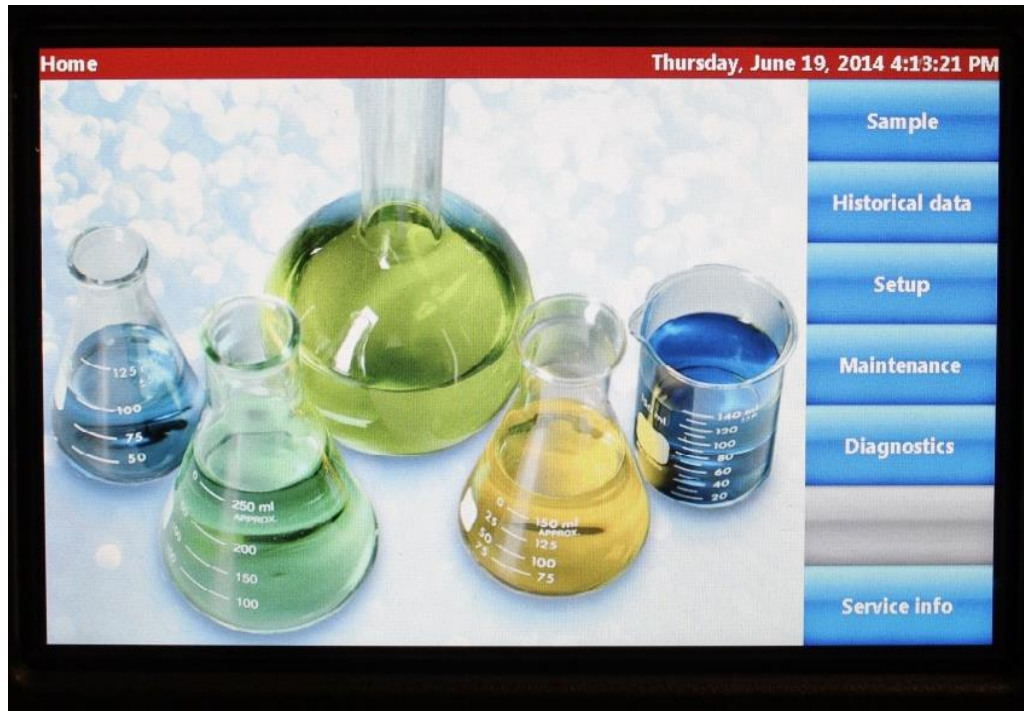


Procedure to add Sample Identification Fields (i.e. Lot#, Sample I.D., Batch I.D.) to the 8011+ recipe

1. From the Home screen press “Setup”



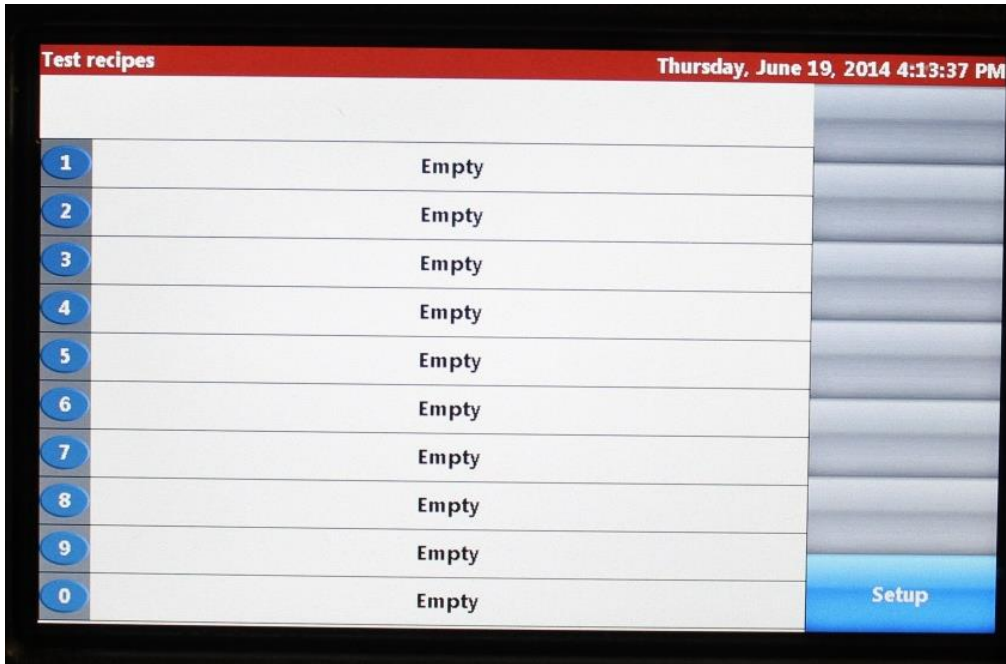
2. Press “Test recipe”



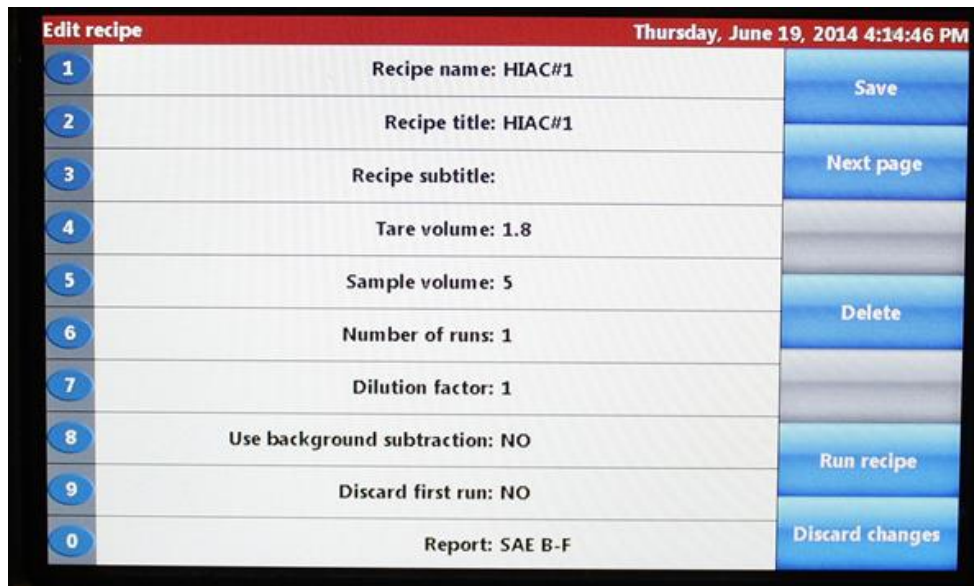
Written by Matt Harle & Bill Bars.
V1.0 June 2014

Procedure to add Sample Identification Fields (i.e. Lot#, Sample I.D., Batch I.D.) to the 8011+ recipe

3. Select the recipe position (1 to 0)

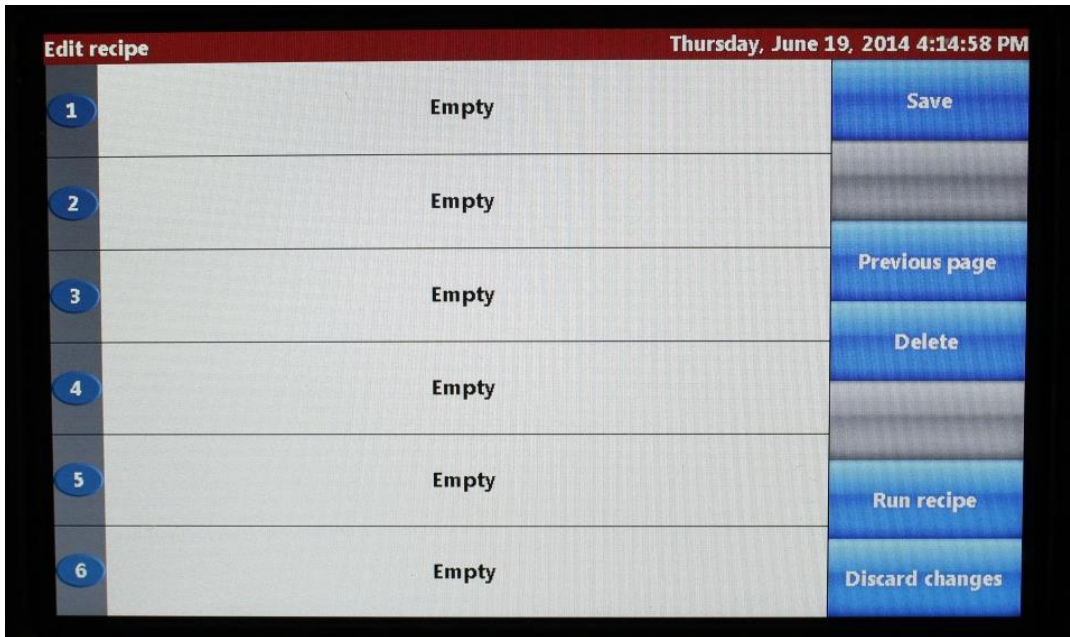


4. Set up the test parameters (Recipe name, recipe title, recipe subtitle, tare, Sample volume, number of runs, dilution factor, etc.) in this example I have called the test "HIAC#1".



Procedure to add Sample Identification Fields (i.e. Lot#, Sample I.D., Batch I.D.) to the 8011+ recipe

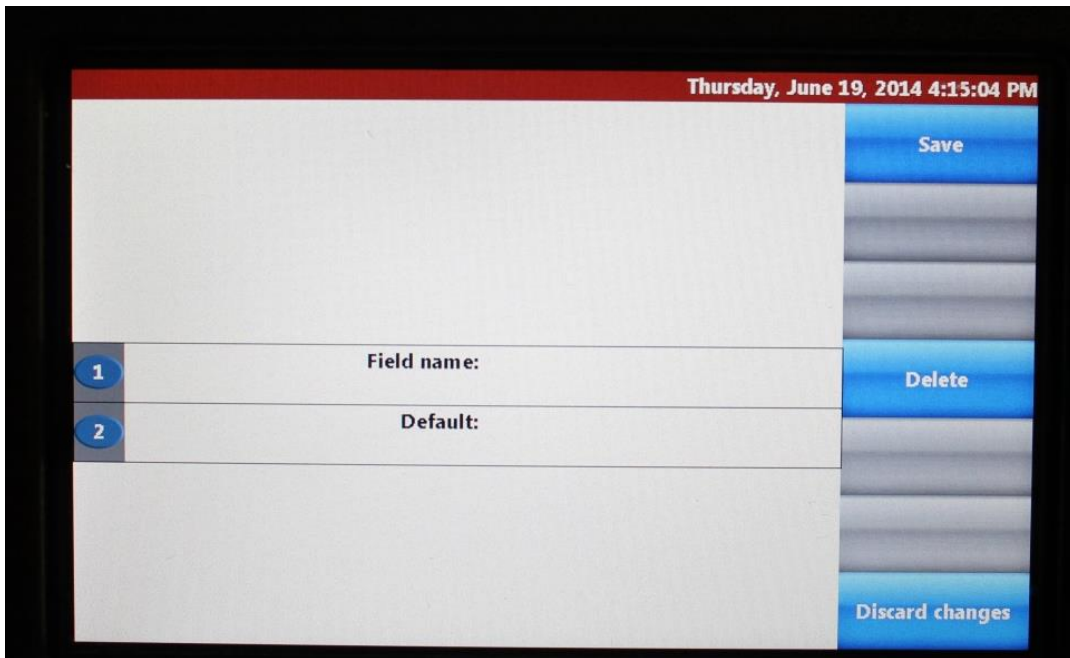
5. Press "Next Page" to access the Sample ID fields 1-6.



The screenshot shows the 'Edit recipe' interface. At the top, it says 'Edit recipe' on the left and 'Thursday, June 19, 2014 4:14:58 PM' on the right. Below this is a table with six rows, each representing a sample ID field. The first column contains numbers 1 through 6. The second column contains the word 'Empty'. The third column contains navigation buttons: 'Save' (next to field 1), 'Previous page' (next to field 3), 'Delete' (next to field 4), 'Run recipe' (next to field 5), and 'Discard changes' (next to field 6).

Field Number	Field Content	Action Buttons
1	Empty	Save
2	Empty	
3	Empty	Previous page
4	Empty	Delete
5	Empty	Run recipe
6	Empty	Discard changes

6. Press "1" to access the first field

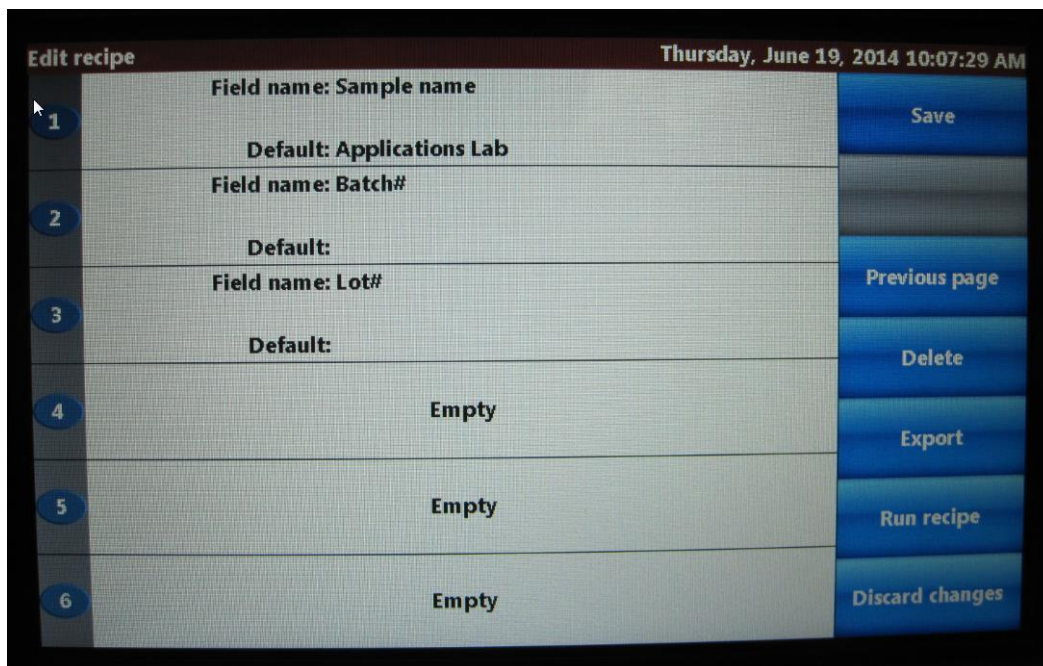


The screenshot shows the 'Edit recipe' interface with the first field selected. At the top, it says 'Thursday, June 19, 2014 4:15:04 PM'. Below this is a large empty text area. Below that are two rows for field configuration: 'Field name:' and 'Default:'. The first row is labeled '1' and the second row is labeled '2'. At the bottom right, there are three buttons: 'Save', 'Delete', and 'Discard changes'.

Field Number	Field Content	Action Buttons
1	Field name:	Save
2	Default:	Delete
		Discard changes

Procedure to add Sample Identification Fields (i.e. Lot#, Sample I.D., Batch I.D.) to the 8011+ recipe

- Press “1” and enter the desired field name information. For example, Sample Name or Lot Number or Batch I.D., etc. The 2nd option within this box is for entering default information may be common to multiple samples and will prepopulate every time so the operator doesn’t have repeatedly enter in this same sample information for every sample. For example enter a Laboratory Name (Example: “Applications Lab”) or Fluid type or any other pertinent information desired.
- Press “Save” twice.
- Repeat steps 5 to 7 to enter additional field names. Remember to press “Save” twice after each change.

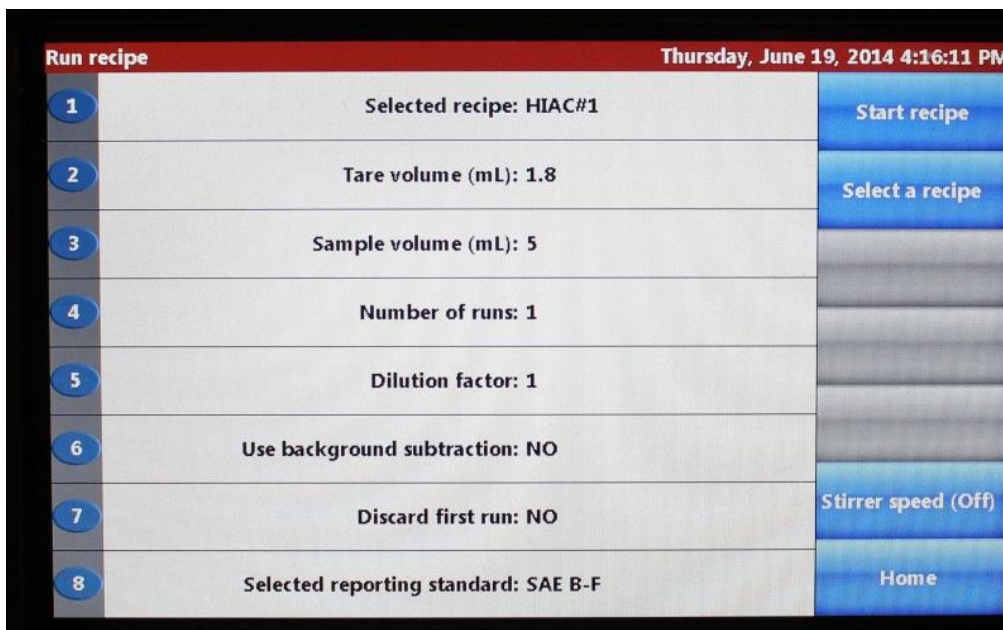


Field ID	Field Name	Default	Action
1	Field name: Sample name	Default: Applications Lab	Save
2	Field name: Batch#	Default:	Previous page
3	Field name: Lot#	Default:	Delete
4	Empty	Empty	Export
5	Empty	Empty	Run recipe
6	Empty	Empty	Discard changes

- Press “Home” to return to the Home screen
- Press “Sample”

Procedure to add Sample Identification Fields (i.e. Lot#, Sample I.D., Batch I.D.) to the 8011+ recipe

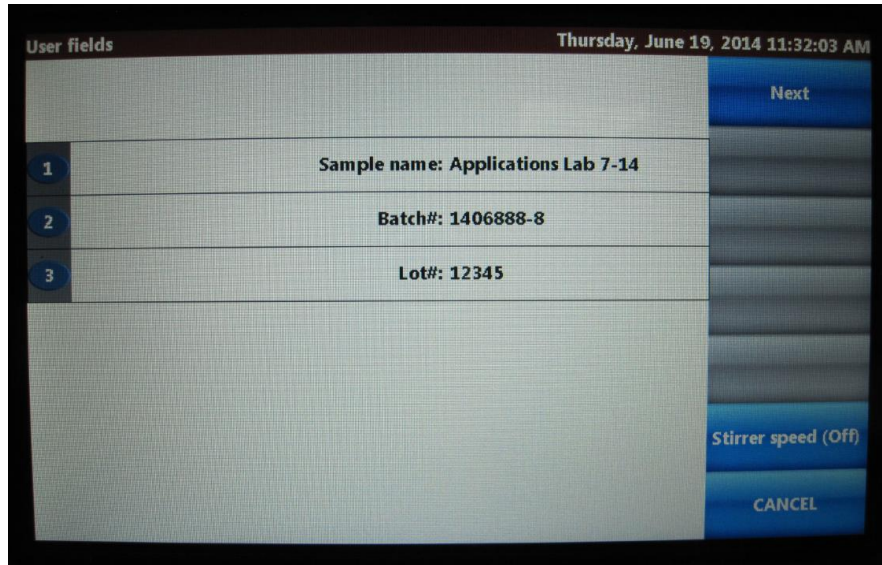
12. Press “Select a recipe” and choose the recipe that you have just created (**HIAC#1**)



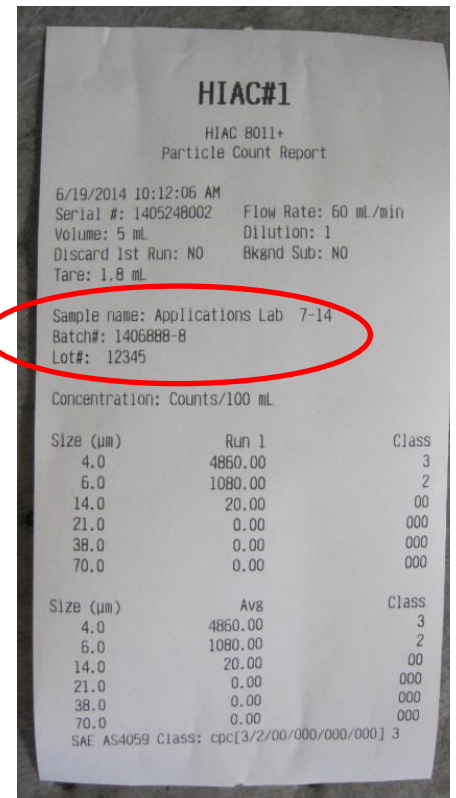
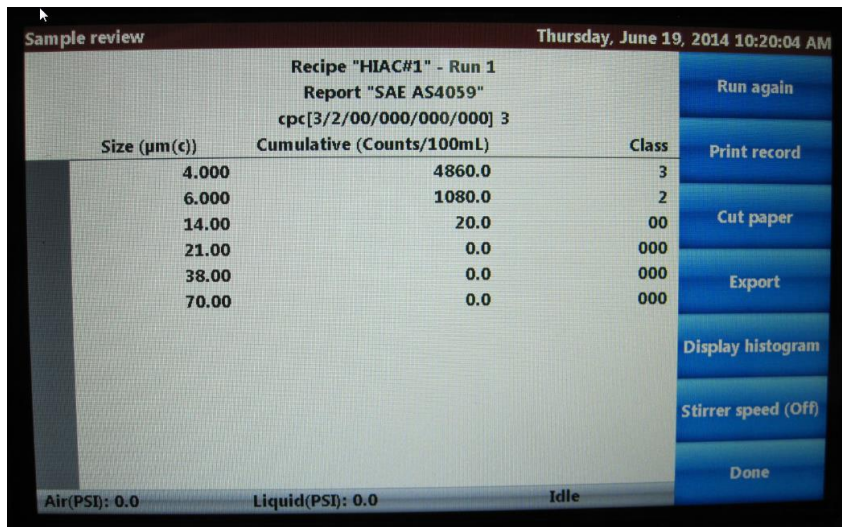
Run recipe		Thursday, June 19, 2014 4:16:11 PM
1	Selected recipe: HIAC#1	Start recipe
2	Tare volume (mL): 1.8	Select a recipe
3	Sample volume (mL): 5	
4	Number of runs: 1	
5	Dilution factor: 1	
6	Use background subtraction: NO	
7	Discard first run: NO	Stirrer speed (Off)
8	Selected reporting standard: SAE B-F	Home

13. Press “Start Recipe”. The instrument will prompt you to enter the sample identification information based upon the field names that you created during the setup steps 5 to 7. Note the “Applications Lab” info is listed behind the Sample name. This is the “default” information that will show up for every sample taken with this recipe. Select Option 1 enter in your specific additional Sample name information, and then repeat for Options 2, and 3 for Batch# and Lot# per our example below. Make sure to save all information after it is entered.

Procedure to add Sample Identification Fields (i.e. Lot#, Sample I.D., Batch I.D.) to the 8011+ recipe



14. Press "Next" and follow the screen prompts as usual. Run your sample and then print the record and note that the Sample printout will be "tagged" with the identifier for easy traceability and ID.



Written by Matt Harle & Bill Bars.
V1.0 June 2014